



## OUR APPROACH

- Allow needs and country-driven goals to drive tool selection, processes, and approaches
- Build capacity by continuously mentoring and engaging local partners
- Implement sustainable, cost-effective, locally owned solutions that are user-centered and integrated with existing systems



## HOW WE WORK: OUR PROJECTS

- DREAMS
- Global Health Supply Chain Technical Assistance-Tanzania
- inSupply
- Maternal and Child Health Integrated Program (MCHIP)
- Maternal and Child Survival Program (MCSP)
- MEASURE Evaluation
- Remote Temperature Monitoring Project
- Strengthening High Impact Interventions for an AIDS-free Generation (AIDSFree)
- Supply Chain Management Systems (SCMS)
- Tanzania Community Health and Social Welfare Systems Strengthening Program (CHSSP)
- USAID | DELIVER PROJECT

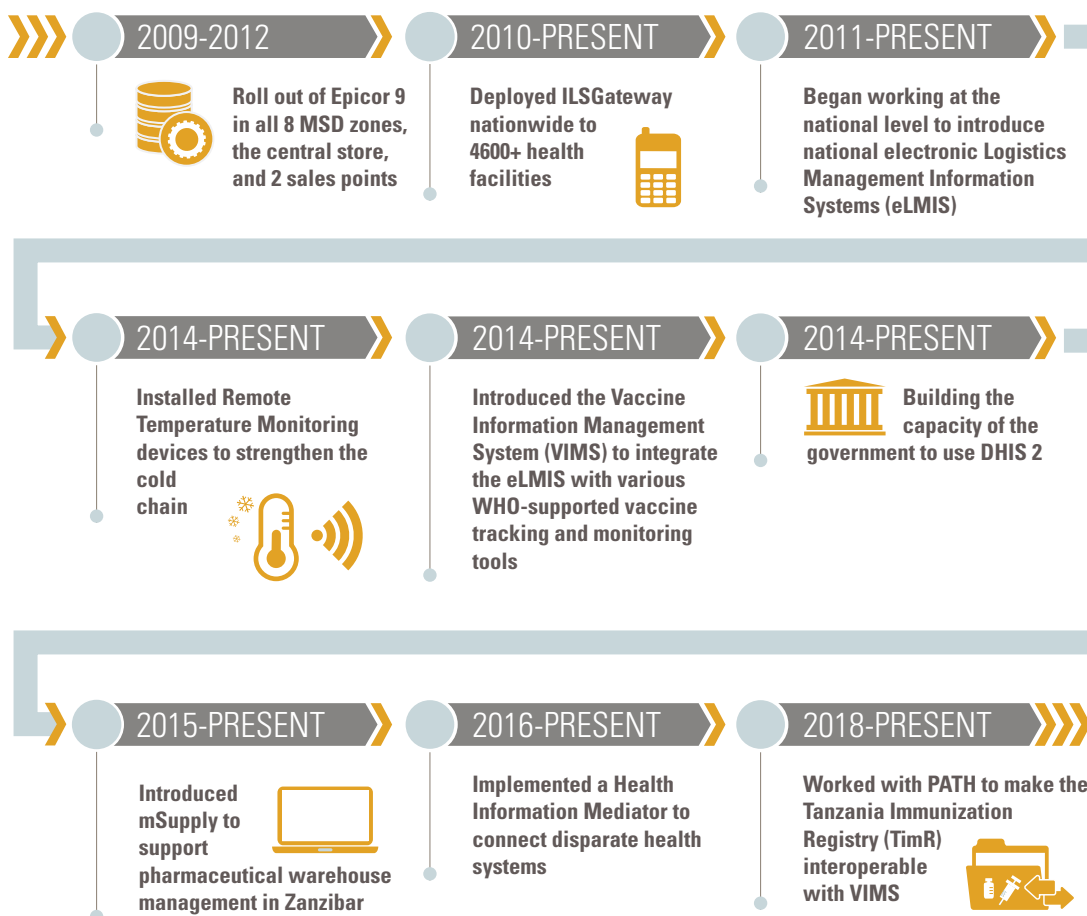


## PARTNERS AND DONORS

- |                                   |               |
|-----------------------------------|---------------|
| • Bill & Melinda Gates Foundation | • Global Fund |
| • CHAI                            | • JHPIEGO     |
| • Gavi, the Vaccine Alliance      | • MSH         |
|                                   | • PATH        |
|                                   | • USAID       |

# Building Stronger Health Information Systems in Tanzania: A DECADE OF COLLABORATION AND LEARNING

In Tanzania, JSI works hand-in-hand with the government to align resources from multiple projects, partners, and donors to build a sustainable, adaptable health information system that produces good quality, timely data for decision-making to improve the lives of the Tanzanian people.





**JSI developed the first electronic Logistics Management Information Systems (eLMIS) business requirements for any low- and middle income country in partnership with Tanzania's government.**

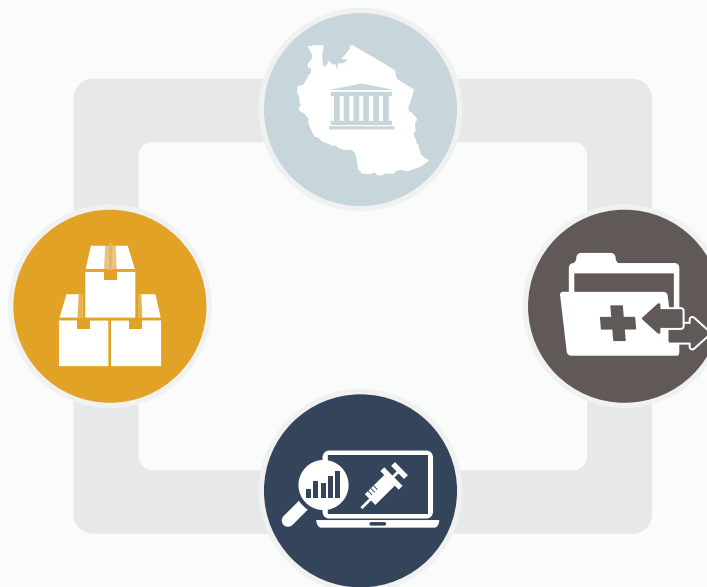
### ENSURING ESSENTIAL HEALTH

#### COMMODITIES REACH THE LAST MILE

- JSI rolled out Epicor 9 in all 8 MSD zones, the central store, and 2 sales points to improve supply chain management
- JSI designed and deployed the ILSGateway – a mobile inventory reporting tool for family planning commodities, including malaria commodities, diagnostic supplies, antibiotics, selected essential medicines. ILSGateway is now used in 4600+ health facilities.
- JSI helped customize **mSupply** – a pharmaceutical management platform – in Zanzibar as well as build the Ministry of Health's capacity to use the systems. In collaboration with mSupply's manufacturer, JSI created an interface between eLMIS and mSupply to link logistics data to the business processes at all levels of the supply chain.

### STRENGTHENING THE NATIONAL HIS

- In 2013, the eLMIS system was rolled out through strategic trainings at each level of the supply chain. The eLMIS receives electronic Request & Requisitions (R&Rs) from 5000+ facilities across the country for family planning, malaria, HIV, TB, and essential medicines commodities. Ministries in both Tanzania Mainland and Zanzibar officially launched eLMIS in June and July 2015, respectively.
- JSI provides technical support, develops apps, resources, and tools, and builds the capacity of Tanzania's Ministry of Health, Community Development, Gender, Elderly and Children (MOHCDGEC), the President's Office- Regional Administration and Local Government (PO-RALG) and other Government of Tanzania stakeholders, particularly at the sub-national level, to ensure that data entered into DHIS 2 are relevant, of high quality, and used for program planning and decision making.



### ACHIEVING INTEROPERABILITY

**Implemented a Health Information Mediator to enable data exchange between 10+ existing health information systems. The mediator will link data from the national and facility levels for better decision-making.**

### IMPROVING INFORMATION SYSTEMS FOR IMMUNIZATIONS

- Coordinated with the government to implement a Vaccine Information Management System (VIMS) module within eLMIS to track data from three vaccine and immunization tracking and monitoring tools: District Vaccines Data Management tool (WHO), Stock Management tool (CHAI), and Cold Chain Equipment Inventory tool (CHAI).
- Supported the implementation and roll out of the Tanzania Immunization Registry (TimR) in the Dodoma region. JSI also worked with PATH to make the system interoperable with the **VIMS** to enable better data synchronization between the two systems.
- Deployed a **remote temperature monitoring** system using cold-trace devices in 5,000 health facilities across Tanzania. The system will enable the country to have real-time data that can be analyzed and used to monitor the performance of vaccine refrigerators, identify problems, maintain vaccine potency, and prevent vaccine wastage.