

# CLIMATE CHANGE AT JSI AND WORLD EDUCATION

## Climate Change directly linked to poor Public Health

The 2015 Lancet Commission on Health and Climate Change found that tackling climate change could be the greatest public health opportunity of the 21st century. Climate change threatens to undermine major gains in development and health both directly and indirectly.

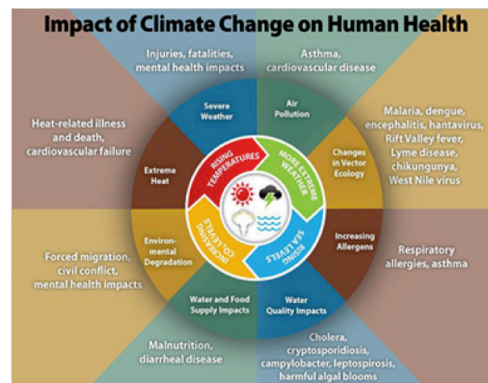
**Direct threats:** Increased heat stress, floods, drought, frequency of intense storms, etc.

**Indirect threats:** Air pollution spread of disease vectors, increased rates of chronic disease, food insecurity and undernutrition, displacement, disruption of health supply chains, etc.

**Vulnerable Communities at highest risk:** The CDC's Climate and Health Program maintains that the health consequences of climate change will be more abundant and harmful to vulnerable populations (e.g., children, the elderly, and people who live in poverty), referring to the cumulative impact of climate change as "morbidity and mortality by a thousand cuts." Notably, many climate change mitigation efforts lead to direct reductions of ill health, enhance community resilience, and alleviate poverty, results that are at the heart of JSI and World Education's mission.

## JSI and World Education at the forefront of integrated Climate Change efforts

John Snow, Inc. (JSI) and World Education believe that addressing climate change is key to advancing our public health and educational goals. Our joint Climate Change Working Group is a storehouse of global Climate Change expertise that serves to develop climate change related awareness and knowledge across the organization and, where appropriate, strategically integrate strategies around climate change mitigation and resilience across our broad array of programs. Our approaches are equity-based, building from the knowledge, assets, and leadership of those populations who are most likely to be impacted in their communities.



Direct and Indirect Effects of Climate Change on Health and Wellbeing. *Source: CDC*

## Cutting-Edge Approaches and Expertise

Community-Centered	Focus on Equity	Capacity Development
JSI is known globally for taking a community-centered approach to addressing public health challenges. We advise major cities and regions on public health and climate change vulnerability & adaptation strategies.	Equity lies at the center of JSI and World Education's Climate Change work, recognizing that the communities that suffer from inequity are often those hit hardest by Climate Change and have the expertise to drive solutions.	JSI and World Education's Capacity Development (CD) Center brings state of the art CD approaches, developing the institutional capacity of local organizations to address climate change, and to identify gaps in systems.
M&E Expertise	Extensive Reach	PHE
JSI and World Education bring Expertise in monitoring and evaluation, developing user friendly frameworks for measuring the integration of health, education, and environmental interventions.	Our global projects have networks reaching a large portion of target regions' populations. Messaging around climate change is easily scaled and can reach extensive populations for greater impact.	JSI is a thought leader and implementing pioneer on the Population, Health and Environment (PHE) approach, integrating the three fields to achieve greater impact individually, and combined.



**JOHN SNOW, INC.**  
**JSI RESEARCH & TRAINING INSTITUTE, INC.**

[www.jsi.com](http://www.jsi.com)

# JSI AND WORLD EDUCATION WORK TO IMPROVE HEALTH, EDUCATION AND ENVIRONMENTAL CONDITIONS IN HIGH-RISK COMMUNITIES



JSI and World Education work to improve health, education and environmental conditions in high-risk communities



Training of Community Health Workers in Madagascar under the USAID Community Capacity for Health Program, implemented by JSI.

We help identify environmental health needs, build collaborations, and implement targeted protective strategies. JSI is available to support the efforts of community groups, environmental and health care organizations, private entities, donors, partners and host country governments.

## Education and Outreach to Build Effective Leadership

**Education and Training** Developing programs and materials in environmental health, pollution prevention, public involvement, and community leadership.

**Outreach** Organizing events from local forums to state, regional and international summits. Developing websites that provide environmental health information to the public, special populations, local communities, health providers, and environmental professionals.

**Model Initiatives** Tailoring programs to inform and engage communities. Reaching and involving low-literacy populations who may be at high-risk from occupational and environmental hazards.

## Supporting Broad-based Community Initiatives to Improve Environmental Health

**Institutional Strengthening** Building capacity of governmental, non-governmental and community-based organizations involved in environmental health activities.

**Coalition Building** Facilitating the formation and maintenance of broad-based coalitions to plan and implement community-wide change. We help identify stakeholders, define operating structure and processes, conduct forums and planning sessions and identify strategies.

**Climate Change Adaptation and Resiliency Planning** Developing strategies and exercising regional emergency response.

**Policy Development** Consulting in all areas of environmental health, including prevention of occupational disease, reduction of environmental exposure, and public participation in environmental programs.

## Technical Assistance to Meet Community Needs

Responding to stated needs of communities in the United States and around the world, JSI provides information and technical services in the areas of education and training, policy development, epidemiology, toxicology, environmental and occupational medicine, emergency response, industrial hygiene, and environmental management.

## Researching the Connections between Health and the Environment

**Health Studies** – Conducting epidemiological research of connections between health and exposures in community and occupational settings.

**Environmental Health Profiles** – Working with public officials, residents, and health providers to gather community-specific information on health status and potential exposure sources. Conducting indoor and outdoor monitoring and providing industrial hygiene inspections of buildings and facilities.

## Population, Health & Environment (PHE)

Integrating *environment* and *sustainable livelihoods* activities into our *public health* programming, JSI has two decades of experience implementing PHE activities around the world. JSI has implemented and funded PHE programs in Madagascar, Ethiopia, and Tanzania. Under the USAID/Washington funded Advancing Partners and Communities (APC) project, and the USAID/Madagascar funded Community Capacity for Health Program, JSI currently developing a state of the art learning agenda that seeks to refine a set of indicators that will help PHE practitioners measure not only the individual fields in which they work, but also the power of integration in building sustainable results.



[www.jsi.com](http://www.jsi.com)