

www.jsi.com

JSI PROMOTING & IMPROVING HEALTH IN THE UNITED STATES

JOHN SNOW, INC.
JSI RESEARCH & TRAINING INSTITUTE, INC.





JSI IS A PUBLIC HEALTH CONSULTING AND RESEARCH ORGANIZATION DEDICATED TO IMPROVING THE HEALTH OF INDIVIDUALS AND COMMUNITIES THROUGHOUT THE WORLD. IN THE UNITED STATES, WE WORK WITH PUBLIC AND PRIVATE SECTOR CLIENTS TO ADDRESS COMPLEX PUBLIC HEALTH ISSUES AND ENSURE EQUITY.

JSI is recognized as a leader for our community, public health, and health system expertise.

We are successful because we achieve optimal results for our clients through collaborative, customized approaches and our goal of improving the health of individuals and communities, in particular underserved and vulnerable populations.





Strong Partnerships

JSI collaborates with universities, research institutions, federal, state, and local agencies, and other organizations to advance best practices. We help our clients build relationships with diverse partners to maximize efforts.

Dedicated Internal Capacity

JSI's reputation is built on the dedication and excellence of our staff in and exceeding client expectations. Our professional staff have advanced degrees and expertise gained from working directly in public and private health sectors.

Focus on Underserved and Vulnerable Populations

Our work is driven by our commitment to health equity. We focus on access to and quality of services and prioritize broad determinants of health, culture, and literacy.



2,000
EMPLOYEES WORLDWIDE

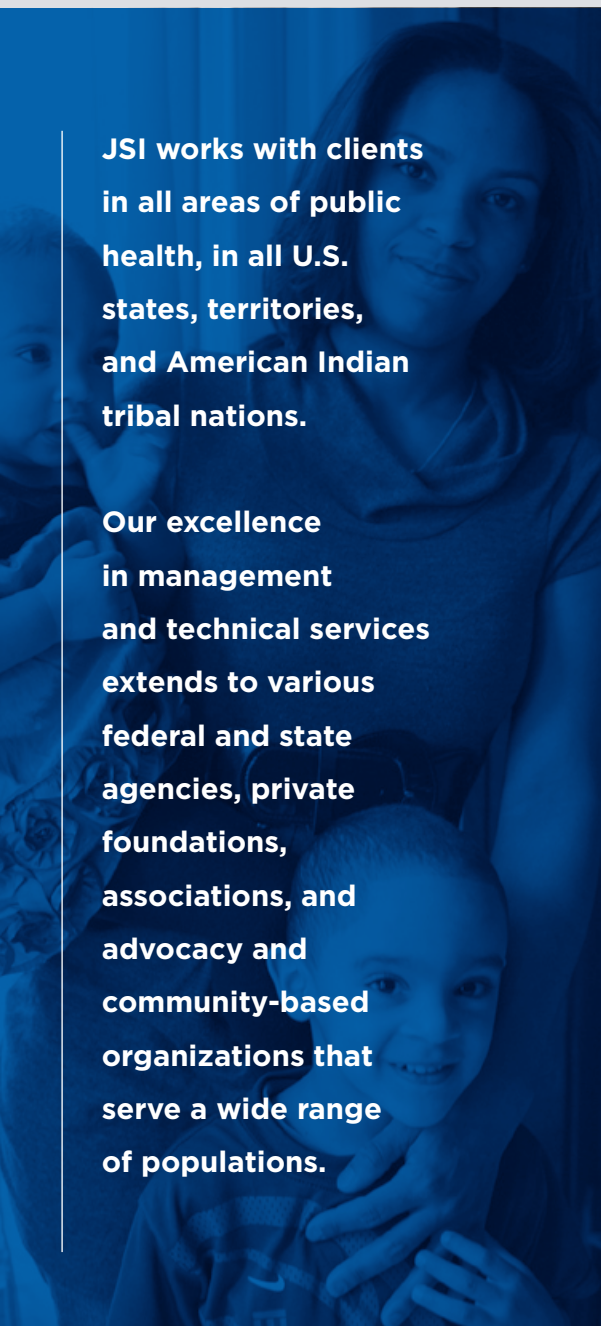


500
EMPLOYEES BASED
IN U.S.



8
U.S. OFFICES

LEARN MORE ABOUT JSI'S SPECIFIC PROJECTS AND SERVICES
IN VIRTUALLY EVERY ASPECT OF PUBLIC HEALTH AT
JSI.com



JSI works with clients in all areas of public health, in all U.S. states, territories, and American Indian tribal nations.

Our excellence in management and technical services extends to various federal and state agencies, private foundations, associations, and advocacy and community-based organizations that serve a wide range of populations.

Selected Clients and Partners

U.S. Department of Health and Human Services and its agencies, bureaus, and divisions including:

- Health Resources and Services Administration (HRSA)
- Centers for Disease Control and Prevention (CDC)
- Agency for Healthcare Research and Quality (AHRQ)
- Substance Abuse and Mental Health Services Administration (SAMHSA)
- Centers for Medicare and Medicaid Service (CMS)
- US Food and Drug Administration (FDA)
- Office of Disease Prevention and Health Promotion
- Office of Minority Health
- Office of Population Affairs
- Office of HIV/AIDS and Infectious Disease Policy
- Office on Women's Health

Other **federal agencies** including:

- Department of Defense
- Department of Veterans Affairs
- Environmental Protection Agency
- National Cancer Institute
- U.S. Coast Guard

State and local agencies including:

- Departments of Public Health
- State Medicaid agencies
- Departments of Behavioral/ Mental Health and Substance Use
- Health Insurance Commission Agencies

Safety net and other types of providers including:

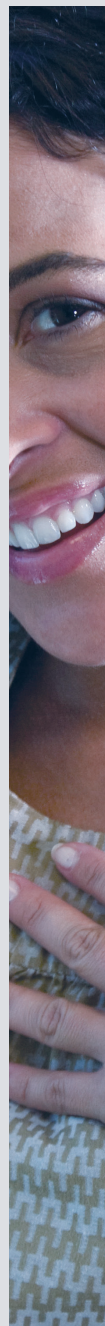
- Critical access hospitals
- Federally qualified health centers
- Public hospitals
- Rural health clinics
- School-based health centers

Other **public and private providers** of health care services including:

- Health plans
- Hospitals
- Long-term care facilities
- Primary and specialty physician practices
- Visiting nurse associations

National, regional, and local foundations that promote the improvement of health care delivery and quality including:

- Blue Cross Blue Shield of Massachusetts Foundation
- Blue Shield of California Foundation
- Health Foundation for Western and Central New York
- Maine Health Access Foundation
- Robert Wood Johnson Foundation





**JSI APPLIES
TECHNICAL
EXPERTISE
ACROSS
A FULL RANGE
OF HEALTH
ISSUES
IN THE
UNITED STATES
TO MEET
THE NEEDS
OF CLIENTS,
ORGANIZATIONS,
AND, ULTIMATELY,
VULNERABLE
POPULATIONS.**

Technical Expertise

- Adolescent Health
- Aging
- Behavioral Health
- Chronic Disease Management
- Community Health Coalitions
- Emergency Preparedness and Response
- Environmental Health
- Family Planning and Reproductive Health
- Health Care Reform
- Healthy Communities
- Health Disparities
- Health Information Technology
- HIV
- Immunization
- Integrated Care Models
- Lesbian, Gay, Bisexual, Transgender, and Queer Health

- Maternal and Child Health
- Native American/American Indian Health Services
- Patient Safety
- Population Health
- Primary Care
- Rural Health
- Safety Net
- State and Local Public Health
- Substance Use

Services

- Health Care Transformation
- Health Communication
- Health Information Technology
- Health Services Planning and Delivery
- Research and Evaluation
- Strategic Planning and Needs Assessments
- Training and Technical Assistance



@JSIHealth



www.jsi.com

HEADQUARTERS

JSI/Boston

44 Farnsworth Street
Boston, MA 02210
Voice: 617.482.9485
Email: jsinfo@jsi.com

Director:
Stewart Landers

REGIONAL U.S. OFFICES

JSI/Atlanta

437 Memorial Dr. SE
Suite A11
Atlanta, GA 30312
Voice: 404.460.4790

Director: *Rene Esler*

JSI/Bow

501 South Street
2nd Floor
Bow, NH 03304
Voice: 603.573.3300

Director:
Jonathan Stewart

JSI/Burlington

95 St. Paul Street
Suite 350
Burlington, VT 05401
Voice: 802.651.7400

Director:
Jonathan Stewart

JSI/DC

1616 N. Fort Myer Drive
16th Floor
Rosslyn, VA 22209
Voice: 703.528.7474

Director: *Carolyn Hart*

JSI/Denver

1725 Blake Street
Suite 400
Denver, CO 80202
Voice: 303.262.4300

Director: *Debra Olesen*

JSI/Providence

235 Promenade Street
Suite 560
Providence, RI 02908
Voice: 401.824.2116

Director:
Stewart Landers

JSI/San Francisco

260 California Street
5th floor
San Francisco,
CA 94111
Voice: 415.400-0020

Director: *Rachel Tobey*