



# Using mHealth to Achieve a Steady Supply of Family Planning Commodities

## { Without data, supply chains falter }

Successful family planning services rely on a steady supply of family planning commodities. To ensure products are available, decisionmakers at the Tanzania Ministry of Health and Social Welfare (MOHSW) need to know the stock levels at health facilities and the flow of products between them. However, sharing this information through traditional paper reports can be difficult and often results in decisionmaking that is based on incomplete data, which in turn contributes to insufficient supply of essential medicines and stock outs.

## { Mobile phones enhance data visibility }

The most basic mobile phone can be a powerful tool to transmit information, such as reports of stock levels. The ILSGateway is a mobile alert and reporting system designed to support and strengthen the Integrated Logistics System (ILS) by:

- ▶ Expanding the accessibility to and visibility of logistics data
- ▶ Improving the use of logistics data for supply chain decisionmaking

What's the stock of health facilities?



## ILSGateway: Opening the Door to Information



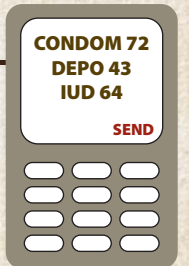
**1** Health worker receives text message on their personal mobile phone requesting the amount of stock-on-hand at the facility.



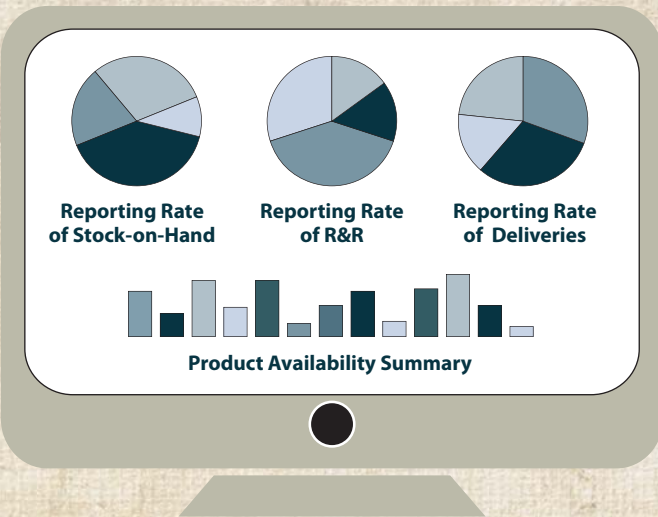
SMS available throughout every phone network provider across Tanzania



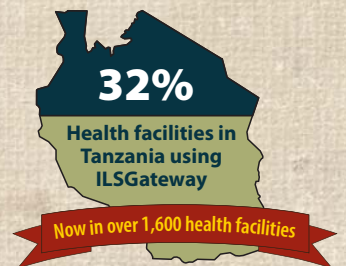
**2** Health worker sends stock-on-hand information to a toll-free short code, in either English or Swahili.



**88%** of health facilities report on time



**3** Accessible through the Internet, the dashboard displays the latest data collected via SMS, enhancing data visibility to support logistics decisionmaking.



**4** Decisionmakers use data to ensure consistent product availability.



**The ILSGateway** is a mobile health (mHealth) solution that tracks 20 essential medicines, along with family planning and malaria products. This mobile phone-based reporting system is not duplicative but rather reinforces and supports the MOHSW's existing paper-based logistics system used to report on essential health products. ILSGateway is constantly being evaluated and improved with routine M&E.

