

Helping People Deliver: Improving patients' lives by strengthening local capacity in supply chain management



Authors: Erin Hasselberg (SCMS), Jennifer Chavez (SCMS in Zambia)

In partnership with

Zimbabwe Ministry of Health
and Child Welfare

Zambia Ministry of Health

Namibia Ministry of Health and
Social Services

Rwanda Ministry of Health

The Challenge:

Health systems depending on timely, accurate supply of commodities can be impacted by:

- Absence of logistics training in health professional curricula
- Unqualified and disempowered staff managing health supply chains
- Costly in-service training, the primary method to fill the skill gap

A Sustainable Solution

Pre-service training (PST) builds a health workforce, competent in supply chain management (SCM) by:

- Introducing principles of SCM to future health workers while they are students
- Instilling local training institutions with a sense of ownership to create a skilled SCM workforce
- Reducing the reliance on in-service training while elevating SCM as a critical health professional skill

Find us on
Facebook



In collaboration with local academic institutions, SCMS has proven that Pre-Service Training activities are a cost-effective, sustainable means of developing local capacity in health SCM

NAMIBIA

The School of Pharmacy now includes pharmaceutical management and procurement courses in its curriculum.

Inaugural cohort of 24 students began the four-year program in February 2011.

ZAMBIA

University of Zambia now requires laboratory logistics courses for laboratory science degree programs.

SCMS led training of trainers for 34 lecturers on collaboratively developed curriculum.

SCMS in-service training costs have reduced by 62% and lecturers have taken ownership of the initiative. 80% of the 272 students trained now work in MOH facilities.

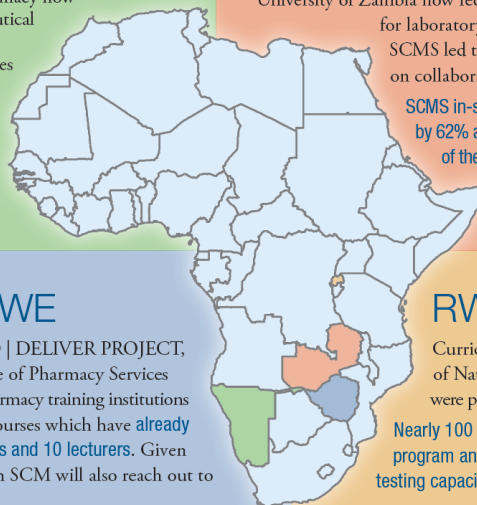
ZIMBABWE

SCMS, the USAID | DELIVER PROJECT, and the Directorate of Pharmacy Services supported three pharmacy training institutions to develop SCM courses which have already trained 240 students and 10 lecturers. Given this success, PST in SCM will also reach out to nursing programs.

RWANDA

Curriculum development and training of National University pharmacy faculty were part of SCMS PST support.

Nearly 100 students have completed the program and contributed to increased local testing capacity.



www.scms.pfscm.org

Presenting Author:

Erin Hasselberg

Principle Advisor, Org. Performance Improvement

JSI, Supply Chain Management Systems

erin_hasselberg@jsi.com

